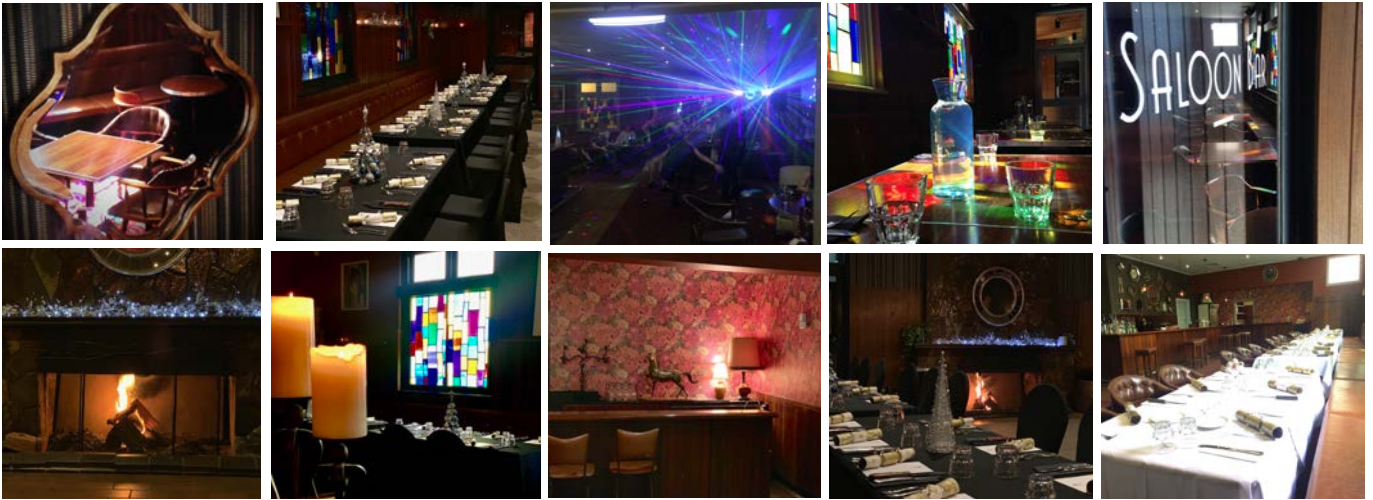


# FUNCTION PACK



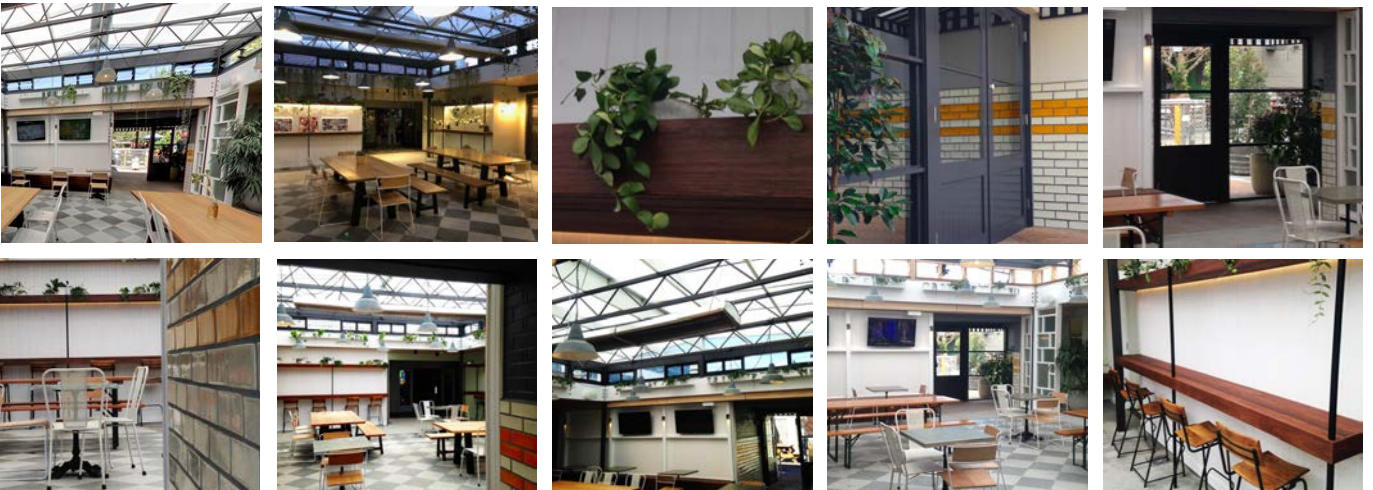
# SALOON

A VINTAGE STYLE SPACE, YOU ARE WELCOMED INTO A UNIQUE PRIVATE AREA WHERE OLD WORLD CHARM MEETS CONTEMPORARY STYLE. LIGHT FILTERS THROUGH THE ORIGINAL STAIN GLASS WINDOWS & SOFTLY ILLUMINATES THE LEATHER CLUB LOUNGES, INVITING OPEN FIREPLACE & WOOD GRAIN BAR GIVING THIS ROOM IT'S CLASSIC ECLECTIC CHARACTER. WITH THE PRIVATE BAR, SEPARATE AV & MUSIC SYSTEM PLUS TWO 50 INCH PLASMA SCREENS, PLUS THE OPTION OF THE ADJOINING COURTYARD THIS ROOM LENDS ITSELF TO A VARIETY OF MID SIZED EVENTS



# COURTYARD

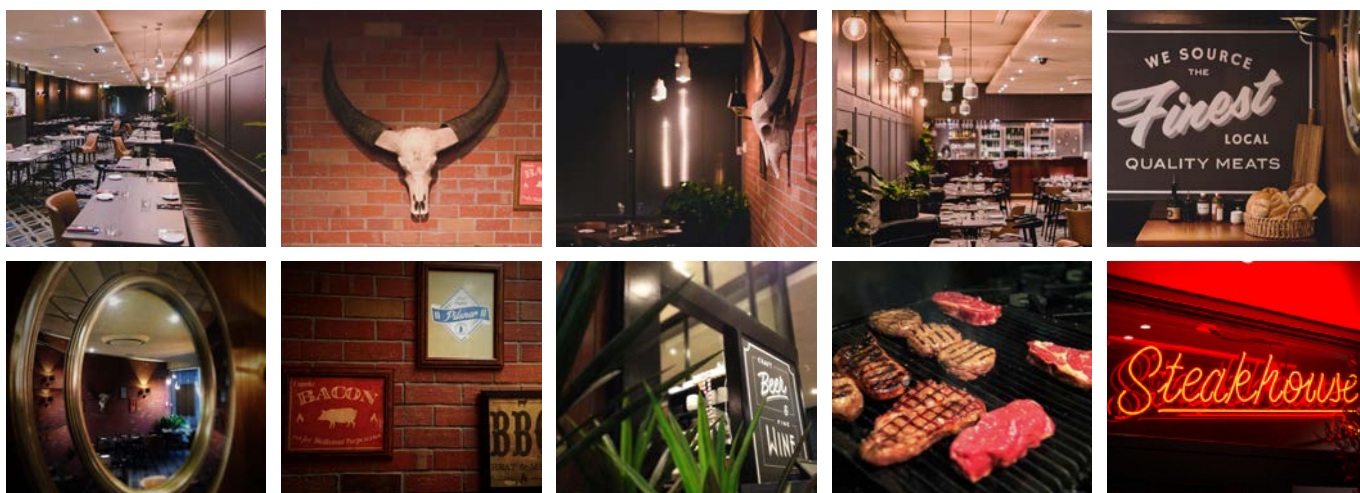
UNDER THE STRIPED CANOPY & THROUGH THE DOUBLE FRENCH DOORS, LIES OUR LIGHT FILLED COURTYARD. SUBWAY WALL TILES, STYLISH PAVING, 50 INCH PLASMA SCREENS, COOLING & HEATING OPTIONS ALLOW FOR ALL THE INTERIOR LUXURIES WHILST ENJOYING A CASUAL ALFRESCO EXPERIENCE AMONGST THE CONSERVATORY PLANTATION SURROUNDS, ALL YEAR ROUND. THIS SPACE HAS FLEXIBLE SEATING ARRANGEMENTS, ADJOINS BOTH THE STEAKHOUSE AND SALOON & HAS THE ABILITY TO BE ENJOYED AS AN EXCLUSIVE AREA WHILST STILL HAVING ACCESS TO ALL OF THE AMENITIES OF THE HOTEL.





# STEAKHOUSE

ESTABLISHING ITSELF AS A DINING EXPERIENCE FOR THOSE WITH AN APPRECIATION OF THE FINER CUTS IN LIFE, OUR STEAKHOUSE OFFERS NOT ONLY AN EXTENSIVE A'LA CARTE MENU FOR LUNCH & DINNER SERVICE, BUT ALSO SET MENU OPTIONS, PRIVATE BAR, SEPARATE AUDIO FACILITIES, PRIVATE KITCHEN, AREAS FOR A DANCE FLOOR & STAGING IF REQUIRED, & BOTH FRONT & REAR ACCESS FROM THE VENUE. WITH THE CLASSIC COATRACK UPON ARRIVAL, LEATHER BOOTH SEATING ALONG THE WALL, WOOD PANELING & EXPOSED BRICKWORK WALLS, THE RICH & RELAXED, MODERN, SPACIOUS INTERIOR LEADS INTO OUR ALFRESCO COURTYARD MAKING THE STEAKHOUSE A VERSATILE CHOICE FOR YOUR NEXT FUNCTION OF ANY VARIETY.



# BEER GARDEN

WITH A REPUTATION FOR BEING ONE OF MELBOURNE'S BIGGEST & BEST, THE NOTTING HILL HOTEL BEER GARDEN BOASTS A HUGE OUTDOOR SCREEN, HEATED UNDERCOVER AREAS, ENTERTAINMENT STAGE, OUTDOOR GAMES & ENCLOSED AREAS FOR THE KIDS & ADULTS ALIKE. WHETHER YOU'RE HOSTING A GARDEN PARTY OR A SUNDAY SESSION WATCHING FOOTY IN FRONT OF THE BIG SCREEN, CHANCES ARE, AMONGST OUR LONG STANDING SHADY TREES & SUNNY OUTDOOR SETTINGS, YOU'LL FIND THE PERFECT SPOT IN OUR ALL-SEASONS BEER GARDEN.



# PAVILION

LOCATED CLOSE TO THE BISTRO AND STEAKHOUSE ENTRANCE, BUT WITHIN THE BEER GARDEN ITSELF THE PAVILION IS A COVERED, HEATED OUTDOOR BAVARIAN STYLE SPACE, SHIELDED FROM THE ELEMENTS, BUT WITH SPACIOUS, OPEN AIR ATMOSPHERE. PROVIDING A SHADY SPOT TO WATCH SPORT ON THE TWO BIG SCREEN T.VS OR A HEATED OUTDOOR OPTION WITH DROP DOWN BLINDS FOR THOSE COOLER NIGHTS.

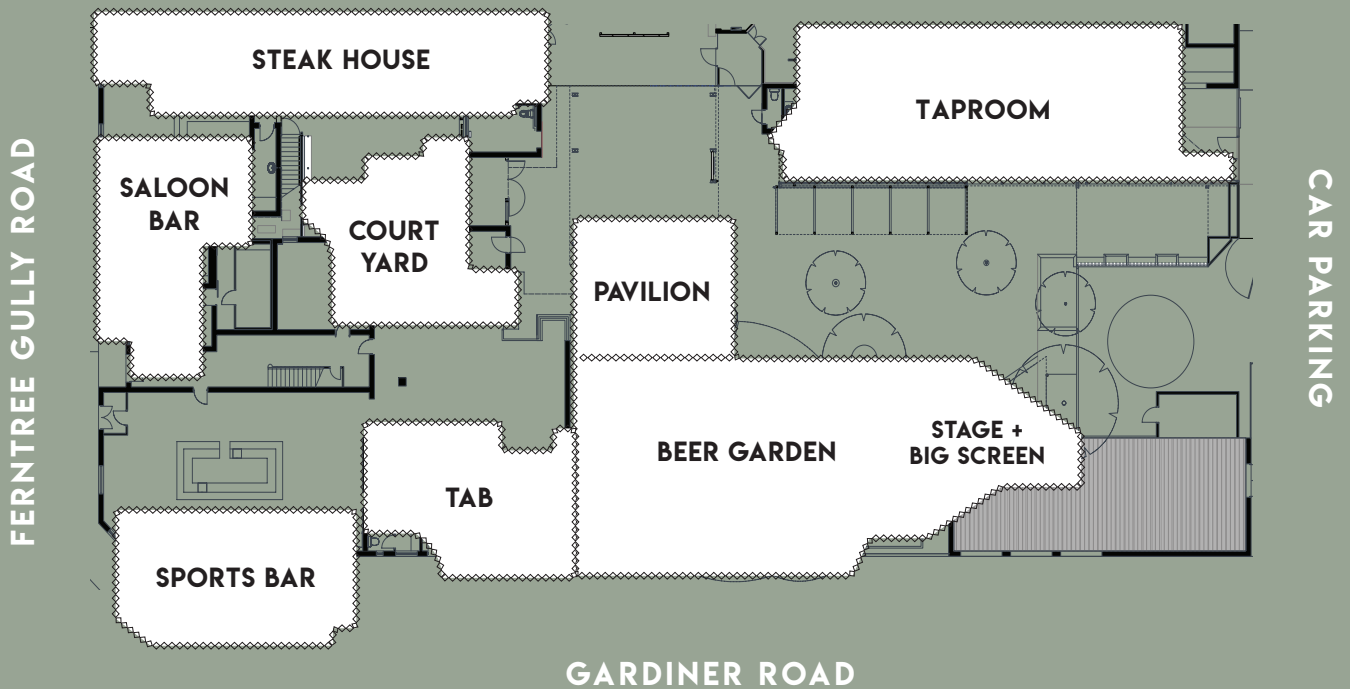


# CAPACITIES

AREA	THEATRE /SEATED	COCKTAIL /STANDING	PRIVATE /SEMI-PRIVATE	TV SCREENS	IPOD	DANCE- FLOOR
SALOON*	48	100	PRIVATE	YES	YES	YES
COURTYARD	70	120	SEMI	YES	YES	YES
PAVILION*	80	130	SEMI	YES	NO	NO
STEAKHOUSE*	120	250	BOTH	NO	YES	YES
BEER GARDEN*	200+	500+	BOTH	YES	YES	YES
BISTRO	160	300	BOTH	YES	YES	YES
ENTIRE VENUE	ON REQUEST	ON REQUEST	PRIVATE	YES	YES	YES

\* THESE AREAS CAN BE EXTENDED INTO THE COURTYARD TO INCREASE CAPACITY. ONSITE & STREET PARKING AVAILABLE

# AREA MAP



# OPTIONS MENU

## ENTERTAINMENT

TRIVIA – 2.5 HRS, 5 ROUNDS, 8 QUESTIONS	FROM \$550
DJ – 5 HRS INCLUDES ALL SETUP, AND LIGHTING	\$550
BAND – 4 HRS	FROM \$600
FIRE PERFORMER (TWO SETS)	\$350
BELLY DANCER (TWO SETS)	\$250
BRAZILIAN SAMBA SHOW (TWO SETS)	\$250
OTHER ENTERTAINMENT CAN BE SOURCED ON REQUEST IE. COMEDIANS ETC	

## OTHER

CANDY BUFFET*	\$8 PP
PHOTO BOOTH (4 HRS)	\$500
PROJECTOR & SCREEN HIRE	\$100
BALLOONS – VARIETY OF COLOURS AVAIL (50/100)	\$120/\$170
SPECIALTY BALLOONS (GIANT FOIL NUMBERS)	\$45 EA
BON BONS/ CHRISTMAS CRACKERS	\$2 EA
ICE CREAM CART	POA
POPCORN MACHINE – UNLIMITED POPCORN (2-4HRS)	\$200

## WEDDINGS

OUR PACKAGES COME WITH STANDARD OPTIONS, THE MAIN BELOW ARE ADDITIONAL OPTIONS WE CAN TAILOR TO SUIT.

### CHAIR HIRE

TIFFANY CHAIRS	\$9
PLAIN WHITE FOLDING CHAIRS	\$7
ORGANZA OR SATIN SASHES – PLEASE CHECK FOR COLOURS	\$2.5
HESSIAN/HESSIAN & LACE SASHES	\$4/4.5

### LINEN

COLOURED OR TRADITIONAL WHITE – PER TABLE	\$20
OVERLAY (RANGE OF COLOURS)	\$15

### CENTERPIECES & DECORATIONS

ASSORTED CENTERPIECES (IE. LANTERNS, BIRDCAGES ETC)	FROM \$25 EA
FLORAL ARCHWAYS AND BACKDROPS	FROM \$200 EA
AISLE CARPET 8M & 10M LENGTHS	FROM \$100 EA
ROSE PETALS FOR SCATTERING/CONFETTI	\$60 PER BUCKET
AISLE DECORATIONS (IE. GLASS JARS/VINTAGE BUCKETS WITH FLOWERS, SHEPHARDS HOOKS AND KISSING BALLS, ETC	FROM \$15 EA

\*PRICES MAY VARY ACCORDING TO AVAILABILITY, MINIMUM ORDERS MAY APPLY.

# FUNCTION FOOD





# COCKTAIL FUNCTION FOOD

## BUILD YOUR OWN PLATTERS - MINIMUM ORDER 20 PIECES PER ITEM

FOR EXAMPLE: 6 PIECES PER PERSON - SELECT 6 OPTIONS AND MULTIPLY BY YOUR EXPECTED NUMBER OF GUESTS

	EA
<b>HEALTHY OPTIONS</b>	
FRESHLY SHUCKED OYSTERS ON ICE W/ LEMON (GF)	4.5
CAPRESE EN CROUTE (V)	3.5
THAI CHICKEN BITE W/COCONUT CREAM	3.5
SPICED BEEF WRAPS W/RELISH & ROCKET (GF)	4
CHILI CHICKEN DUMPLINGS	4
PORK & BUK CHOI DUMPLINGS	4
BBQ PORK BUNS & CHINESE BLACK VINEGAR	4
<b>RIBBON SANDWICHES</b>	
CHICKEN, MAYO & SPRING ONION	4
HAM, CHEESE & RELISH	4
EGG, CHIVES & PARSLEY	3.5
<b>GOURMET PARTY</b>	
ZUCCHINI, JAPEPNO & MANCHEGO POPPERS (V)	4.5
MINI HOT DOGS W/ TOMATO RELISH	4.5
PUMPKIN & GOATS CHEESE ARANCINI (V)	3.5
PEKING DUCK SPRING ROLLS	4.5
MIXED VEGETABLES SPRING ROLLS (V)	4
MINI CHEESE BURGER	5
<b>CROWD PLEASERS</b>	
HOUSE MADE ANGUS BEEF SAUSAGE ROLLS IN BUTTER PUFF PASTRY & TOMATO SAUCE	4
BEEF & BURGANDY MINI PIE	4
MINI QUICHE LORRAINE	4
MINI QUICHE SEMI DRIED TOMATOES & FETA (V)	4
TWO INCH PIZZA - MARGHERITA (V)	3.5
TWO INCH PIZZA - HOT CHORIZO, CARAMELISED ONION & GOATS CHEESE	4
<b>CALAFORNIAN NORI ROLLS (G.F. AVAIL)</b>	
AVOCADO (V)	3
PICKLED VEGETABLES (V) (VE)	3.5
TERIYAKI CHICKEN	3.5
PRAWN AVOCADO	3.5
COOKED TUNA	3.5
RAW SALMON	3.5
<b>BOWL/SUBSTANTIAL</b>	
FISH & CHIPS	7
SALT & PEPPER SQUID	7
CHICKEN SPARE RIB	7
THAI BEAN CURD	7
<b>SWEETS</b>	
MINI LEMON CURD TARTLETS	4.0
INDIVIDUAL PAVLOVAS W/ STRAWBERRY, KIWI, PASSIONFRUIT & CREAM	4.5
MINI CHOCOLATE TARTS	4.0
CHERRY COCONUT PROFITEROLES	4.5



# GRAZING TABLE

MINIMUM 20 PAX

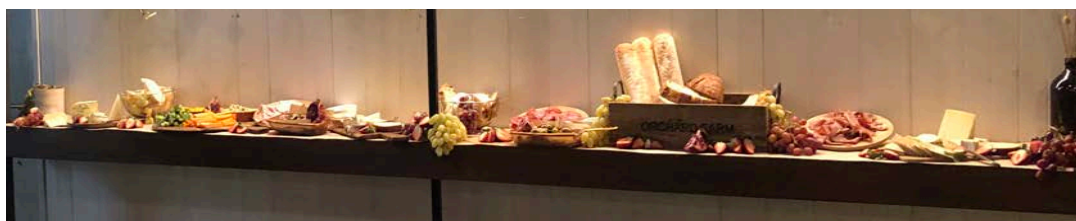


## MIXTURE OF:

ARTISAN CHEESE  
ASSORTMENT OF DIPS  
CHARCUTERIE  
CRUDITÉ & FRESH FRUIT  
OLIVES  
ANTIPASTO  
ASSORTMENT OF BREADS &  
CRACKERS



\$19.5 PP



## +ADD

## 2HR WINE PACKAGE

\$39.5 PP

Selected Mitchelton and Tatachilla wines –  
Sparkling | Sauv blanc | Chardonnay | Pinot Noir | Shiraz

# PACKAGE OPTIONS



## BBQ A

PACKAGES CAN BE TAILORED TO  
INCLUDE CANAPES AND DESSERTS

MIN 25

### (3 MEATS + 3 SALADS + ROLLS & CONDIMENTS)

\$25.5 PP

SEASONED BEEF PATTIES  
ENGLISH PORK SAUSAGES  
PERI PERI CHICKEN STEAKS

## BBQ B

### (4 MEATS + 3 SALADS + ROLLS & CONDIMENTS)

\$29.5 PP

SEASONED BEEF PATTIES  
ENGLISH PORK SAUSAGES  
PERI PERI CHICKEN STEAKS  
GRASS FED BEEF STEAKS

## SPIT ROAST

### (3 MEATS + 3 SALADS + BAKED POTATOES & CONDIMENTS)

\$32.5 PP

BONED & ROLLED LAMB SHOULDER  
BONED & ROLLED PORK LOIN  
BONELESS MARINATED CHICKEN MARYLANDS

## SALADS

TRADITIONAL GARDEN SALAD W / BALSAMIC DRESSING  
TRADITIONAL COLESLAW  
POTATO SALAD W/ RED ONION & GRAIN MUSTARD

VEGETARIAN OPTIONS AVAILABLE UPON REQUEST

# FUNCTION SET MENU



CHOICE OF TWO ENTREES, TWO MAINS OR TWO DESSERTS  
... SERVED ON A 50/50 BASIS FOR BOOKINGS OF 20 OR MORE

2 COURSE

\$55

3 COURSE

\$65

## ENTREE

SALT & PEPPER CUTTLEFISH W/ GARLIC AIOLI

CRISPY CHICKEN SPARE RIBS W/ CRACKED PEPPER & LIME

BBQ QUAIL W/ WARM LENTIL SALAD & POMEGRANATE

CRISPY SKIN PORK BELLY W/ SLAW & SEARED SCALLOPS

## MAIN

HAND CRUMBED BANNOCKBURN FREE RANGE CHICKEN PARMA,  
W/ HOUSE SALAD & FRIES

300G BLACK ANGUS SLOW ROASTED PORTERHOUSE  
W/ FRIES & MUSHROOM SAUCE SERVED MEDIUM

ROSEMARY & GARLIC LAMB RUMP

W/ KIPFLER CORN & BACON SMASH

CRISPY SKIN OCEAN TROUT

W/ BASIL PESTO RISOTTO

## SIDES

GREEN SALAD TO SHARE

## DESSERT

POACHED QUINCE W / LAVENDER CREAM & VANILLA BEAN ICE CREAM

FLOURLESS CHOCOLATE CAKE W / DOUBLE CREAM

LEMON CURD & LIME TART W / VANILLA BEAN ICE CREAM

... DIETARY REQUIREMENTS AVAILABLE UPON REQUEST



## CHRISTMAS MENU *(min 20 people)*

*...Served alternating 50/50 drop, please select 2 options for each course*

2 COURSE	\$45.0
3 COURSE	\$55.0

### ENTREE

**twice baked goats cheese souffle** w/ leeks & creamed spinach

**smoked hock & truffle terrine** w/ charred sourdough

**betel leaf, scallops, chorizo, & ruby**  
grapefruit, mint

### MAIN

**turkey coq au vin** w/ parsley mash

**bbq porterhouse,** w/ yorkshire pudding & green beans

**slow roasted lamb shoulder** w/ cauliflower puree & caramelised sprouts

### DESSERT

**christmas pudding** w/ brandy cream

**eton mess**

**chocolate tart** w/ berry compote

**Complimentary tea and coffee to conclude**

*... dietary requirements available upon request*

# CORPORATE PACKAGES

... ALL PRICES ARE BASED PER PERSON + ON A MINIMUM OF TEN

## STANDARD REFRESHMENT

\$5.5 PP

SELF SERVE COFFEE STATION & SELECTION OF TEAS W / ASSORTED BISCUITS

## BARISTA BREWED

\$8.5 PP

BARISTA BREWED COFFEE & TEA W/ ASSORTED BISCUITS

## FULL BREAKFAST

\$28.5 PP

ASSORTED MUFFINS, PASTRIES & FRESH FRUIT  
SCRAMBLED EGG, BACON & ROASTED TRUSS TOMATO ON SOURDOUGH  
ASSORTED CEREALS  
BARISTER BREWED COFFEE, ASSORTED TEAS & FRESH FRUIT JUICE

## MORNING OR AFTERNOON TEA

\$15 PP

ASSORTED MUFFINS OR MINI PASTRIES & FRESH FRUIT PLATTER  
BARISTA COFFEE & A SELECTION OF TEAS & FRESH FRUIT JUICE

## LUNCH

\$26 PP

ASSORTED SANDWICHES, BAGUETTES & WRAPS  
FRESH SEASONAL FRUIT PLATTER  
COFFEE & A SELECTION OF TEAS  
MINERAL WATER & JUICE

... PROJECTOR + PROJECTOR SCREEN AVAILABLE



## MINIMUM ORDERS OF 20 PIZZAS -

ORDERS WILL BE SERVED AT A RATE OF 6 PIZZAS PER 15 MINUTES DURING PEAK SERVICE PERIODS



# PIZZERIA



## MARGHERITA

SAN MARZANO TOMATO,  
FIOR DI LATTE, BASIL - 16.5

## MUSHROOM

3 CHEESE, SWISS BROWNS,  
PARSLEY, TRUFFLE OIL - 18.5

## POTATO

KIPFLER POTATO, TALEGGIO, FIOR  
DI LATTE, SALSA VERDE - 17.5

## HAM & PINEAPPLE

SAN MARZANO TOMATO, FIOR DI  
LATTE, GYPSY HAM, PINEAPPLE -  
18.5



## PRAWN

FIOR DI LATTE, PRAWN, PEAS,  
CHILLI, CHERRY TOMATO,  
CORIANDER PESTO - 20.5

## PANCETTA

SAN MARZANO TOMATO,  
PANCETTA, CHILLI, OLIVES,  
FIOR DI LATTE, BASIL - 19.5

## PEPPERONI

SAN MARZANO TOMATO,  
FIOR DI LATTE, PEPPERONI,  
PARSLEY - 18.5

**GF OPTIONS AVAILABLE  
- ADD \$3**

## LAMB

SAN MARZANO  
TOMATO, FETA, LAMB,  
PEAS, PINENUTS,  
PARSLEY, MINT - 20.5

## HOT FAT

SAN MARZANO TOMATO,  
CHORIZO, BACON, SALAMI,  
WHITE ANCHOVIES, FIOR DI  
LATTE, PARSLEY - 19.5

## VEGAN

SAN MARZANO TOMATO, VEGAN  
MOZZARELLA, VEGAN TASTY  
CHEESE, MUSHROOMS, ROSEMARY,  
PEAS, CHERRY TOMATOES, BASIL &  
TRUFFLE OIL - 19.5

## WANT IT DELIVERED?

DELIVERY AVAILABLE THROUGH UBER EATS + [MENULOG/WWW.NOTTINGHILLHOTEL.COM.AU](http://MENULOG/WWW.NOTTINGHILLHOTEL.COM.AU)

### DIETARY REQUIREMENTS

(v) vegetarian (gf) gluten free - please advise staff of any dietary requirements - gluten free: dishes marked (gf) may be cooked in equipment that may contain traces of wheat & flour. We endeavor to prevent this but do not accept any liability should this occur.

# BEVERAGE PACKAGES

## CHOOSE FROM SELECTED COCKTAILS ON ARRIVAL FROM \$14 PP

- PIMMS CUP
- ESPRESSO MARTINI
- MOJITO
- APEROL SPRITZ



### BAR TAB OR ON CONSUMPTION

A BAR TAB CAN BE SET AT THE COMMENCEMENT OF YOUR FUNCTION WITH A SPECIFIED LIMIT OR AMOUNT. PLEASE NOTE PRE AUTHORISED CREDIT CARDS WILL BE TAKEN. THIS CAN BE REVIEWED AS YOUR FUNCTION PROGRESSES, AND INCREASED IF REQUIRED. OR BY CONSUMPTION, SIMILAR TO A BAR TAB HOWEVER GENERALLY THERE IS NO LIMIT OR AMOUNT SET.

### CASH BAR

WITH FULLY STOCKED BARS & BEERS ON TAP, YOUR GUESTS WILL BE ABLE TO SELECT FROM A LONG LIST OF DRINKS, WHICH THEY CAN PURCHASE AS THEY GO.

## PREMIUM

SELECTION OF PREMIUM BEVERAGES INCLUDING CRAFT BEER ON TAP, AUSTRALIAN STILL & SPARKLING WINE, FRUIT JUICE, SOFT DRINK & WATER.

**2 1/2 HOURS**

\$50 PP

**3 1/2 HOURS**

\$60 PP

## DELUXE

SELECTION OF PREMIUM BEVERAGES INCLUDING CRAFT BEER ON TAP, AUSTRALIAN STILL & SPARKLING WINE, HOUSE SPIRITS, FRUIT JUICE, SOFT DRINK & WATER.

**2 1/2 HOURS**

\$60 PP

**3 1/2 HOURS**

\$65 PP



# CONTACT US

**(03) 9544 3031**

[info@nottinghillhotel.com.au](mailto:info@nottinghillhotel.com.au)

**[www.nottinghillhotel.com.au](http://www.nottinghillhotel.com.au)**

260-262 FERNTREE GULLY ROAD, NOTTING HILL, VIC 3168

©THENOTTINGHILLHOTEL / NOTTINGHILLHOTEL ... JOIN US ON SOCIAL MEDIA TO KEEP UP TO DATE WITH WHAT'S ON!

